

ELECTRICAL SPECIFICATIONS (5HP):

MAIN VOLTAGE: 230V/1PH/60HZ
MINIMUM CIRCUIT AMPACITY (MCA): 47 AMPS
MAXIMUM OVERCURRENT PROTECTION (MOP): 75 AMPS

MAIN VOLTAGE: 230V/3PH/60HZ
MINIMUM CIRCUIT AMPACITY (MCA): 35 AMPS
MAXIMUM OVERCURRENT PROTECTION (MOP): 57 AMPS

MAIN VOLTAGE: 460V/3PH/60HZ
MINIMUM CIRCUIT AMPACITY (MCA): 18 AMPS
MAXIMUM OVERCURRENT PROTECTION (MOP): 29 AMPS

WEIGHT SPECIFICATIONS (5HP):

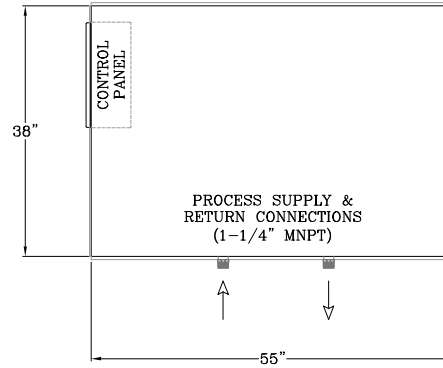
ESTIMATED SHIPPING WEIGHT (CRATED): APPROX. 1,100 LBS
ESTIMATED OPERATING WEIGHT: APPROX. 1,100 LBS

COOLING CAPACITIES:

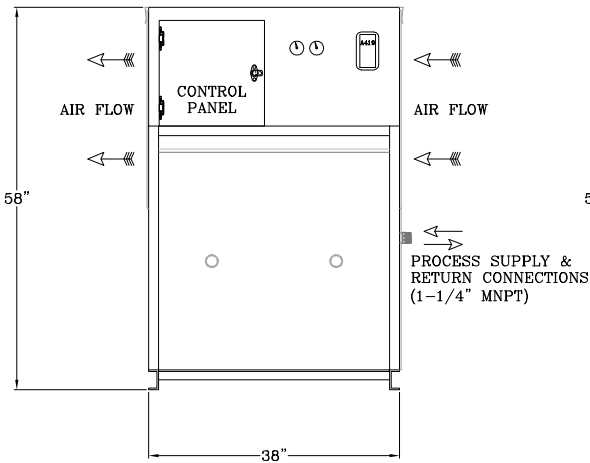
AT 90 °F AMBIENT
25 °F GLYCOL: 32800 BTU/HR (9.6KW)
30 °F GLYCOL: 36100 BTU/HR (10.6KW)
35 °F GLYCOL: 39600 BTU/HR (11.6KW)

SOUND PRESSURE LEVEL:

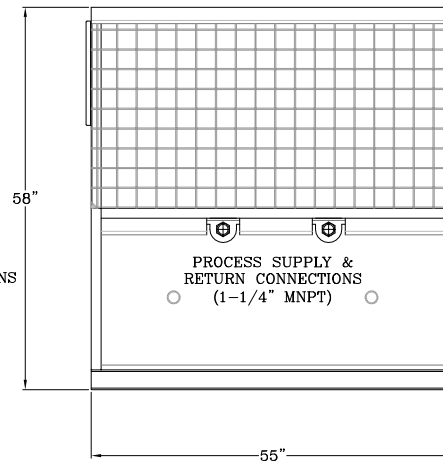
76 dB @ 1m



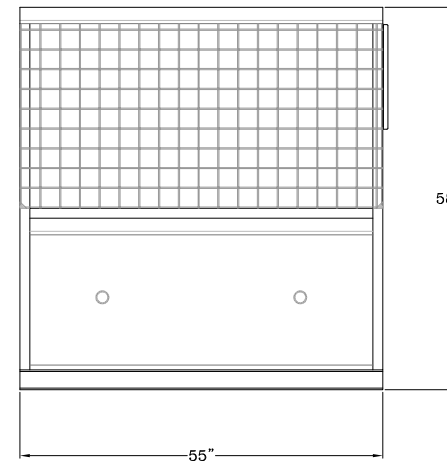
PLAN VIEW



FRONT ELEVATION



SIDE ELEVATION 1



SIDE ELEVATION 2

Drawing No.:

101102003

Model:

PE105F1R420-A

Customer:

SUBMITTAL

Drawn By:

NJ

Date:

6/4/15

Rev.	Date	Description
9	2/23/16	MOVED TANK LOCATION AND FRAME MEMBERS

Notes:

- Options added to the chiller equipment (i.e. pumps, heat recovery, tank size, etc.) may affect the configuration (i.e. weight, dimensions, electrical requirements, etc.). Please verify final configuration of equipment.
- Dimensional tolerance: +/- 2" nominal.

PRO Refrigeration, Inc.

326 8th Street SW Auburn, WA 98001
T: (253) 735-9466 / F: (253) 735-2631
www.prochiller.com

