

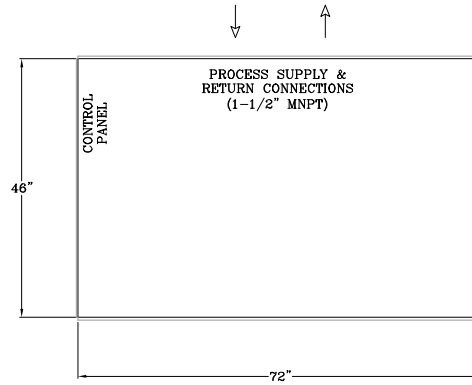
ELECTRICAL SPECIFICATIONS (7.5HP):
 MAIN VOLTAGE: 230V/3PH/60HZ
 MINIMUM CIRCUIT AMPACITY (MCA): 50 AMPS
 MAXIMUM OVERCURRENT PROTECTION (MOP): 77 AMPS

MAIN VOLTAGE: 460V/3PH/60HZ
 MINIMUM CIRCUIT AMPACITY (MCA): 25 AMPS
 MAXIMUM OVERCURRENT PROTECTION (MOP): 39 AMPS

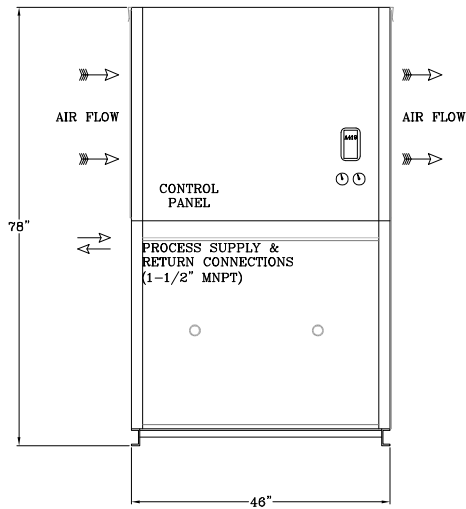
WEIGHT SPECIFICATIONS (7.5HP):
 ESTIMATED SHIPPING WEIGHT (CRATED): APPROX. 1,800 LBS
 ESTIMATED OPERATING WEIGHT: APPROX. 2,000 LBS

COOLING CAPACITIES:
 AT 90 °F AMBIENT
 25 °F GLYCOL: 63861 BTU/HR (18.7KW)
 30 °F GLYCOL: 71968 BTU/HR (21.1KW)
 35 °F GLYCOL: 80635 BTU/HR (23.6KW)

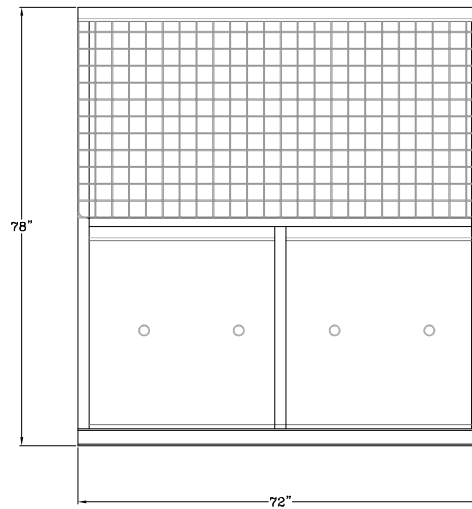
SOUND PRESSURE LEVEL:
 77 dB @ 1m



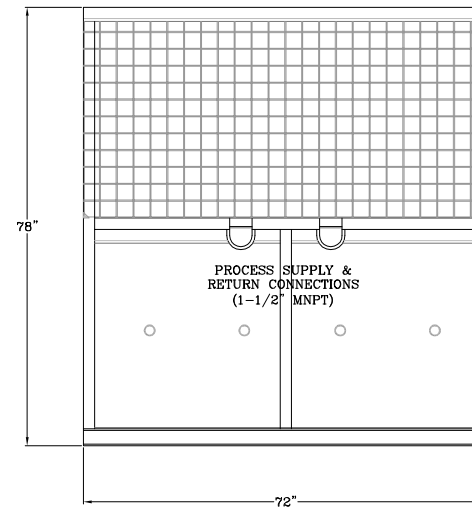
PLAN VIEW



FRONT ELEVATION



SIDE ELEVATION 1



SIDE ELEVATION 2

Drawing No.:

101102004

Model:

7.5 HP ChilStar

Customer:

SUBMITTAL

Drawn By:

Date:

-

-

| Rev. | Date | Description |
|------|------|-------------|
| △ | - | - |
| | | |
| | | |
| | | |
| | | |
| | | |
| | | |
| | | |
| | | |

Notes:

- Options added to the chiller equipment (i.e. pumps, heat recovery, tank size, etc.) may affect the configuration (i.e. weight, dimensions, electrical requirements, etc.). Please verify final configuration of equipment.
- Dimensional tolerance: +/- 2" nominal.

PRO Refrigeration, Inc.

326 8th Street SW Auburn, WA 98001
 T: (253) 735-9466 / F: (253) 735-2631
 www.prochiller.com

