

Drawing No.:

101102002

Model:

PE103D1R420-A

Customer:

SUBMITTAL

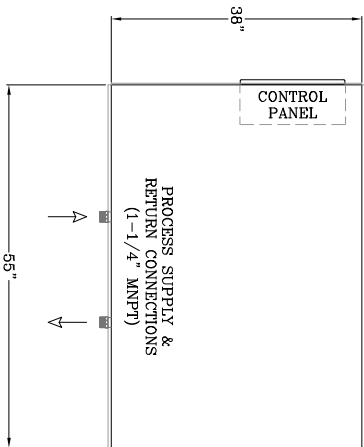
Drawn By:

NJ 6/4/15

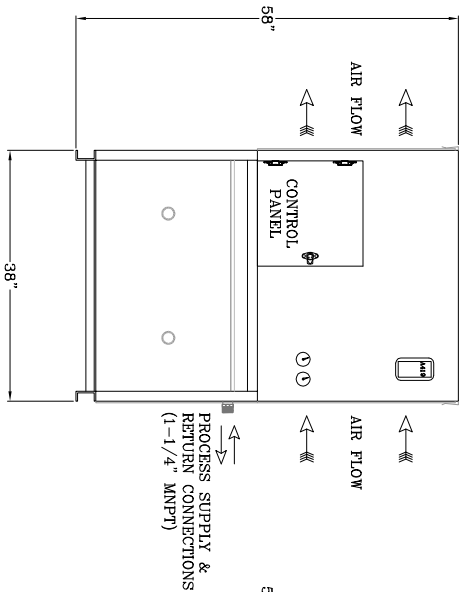
Date:

Rev.	Date	Description
1	-	-

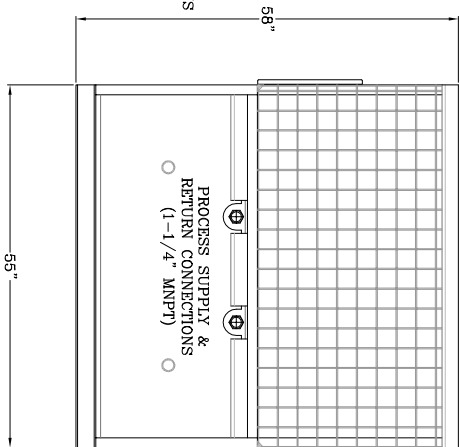
ELECTRICAL SPECIFICATIONS (3HP):
 MAIN VOLTAGE: 230V/1PH/60HZ
 MINIMUM CIRCUIT AMPACITY (MCA): 34 AMPS
 MAXIMUM OVERCURRENT PROTECTION (MOP): 53 AMPS
 MAIN VOLTAGE: 230V/3PH/60HZ
 MINIMUM CIRCUIT AMPACITY (MCA): 25 AMPS
 MAXIMUM OVERCURRENT PROTECTION (MOP): 41 AMPS
 MAIN VOLTAGE: 480V/3PH/60HZ
 MINIMUM CIRCUIT AMPACITY (MCA): 12 AMPS
 MAXIMUM OVERCURRENT PROTECTION (MOP): 19 AMPS
 WEIGHT SPECIFICATIONS (3HP):
 ESTIMATED SHIPPING WEIGHT (CRATED): APPROX. 950 LBS
 ESTIMATED OPERATING WEIGHT: APPROX. 950 LBS



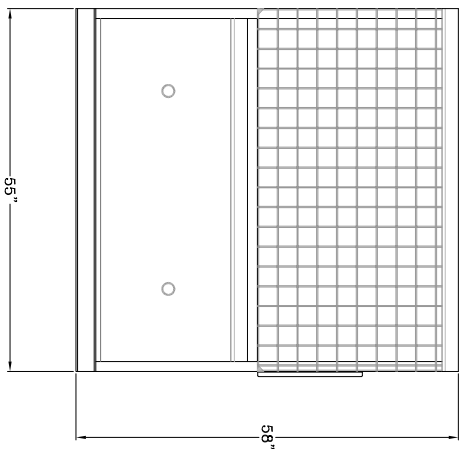
PLAN VIEW



FRONT ELEVATION



SIDE ELEVATION 1



SIDE ELEVATION 2

Notes:

- Options added to the chiller equipment (i.e. pumps, heat recovery, tank size, etc.) may affect the configuration (i.e. weight, dimensions, electrical requirements, etc.). Please verify final configuration of equipment.
- Dimensional tolerance: +/- .2" nominal.

PRO Refrigeration, Inc.

336 8th Street SW Auburn, WA 98001
 T: (253) 735-0466 / F: (253) 735-2831
 www.prochillers.com

