

Drawing No.:

101102004

Model:

PM108F2R420-A*

Customer:

SUBMITTAL

Drawn By:

Date:

Rev.	Date	Description
1	-	-

Notes:

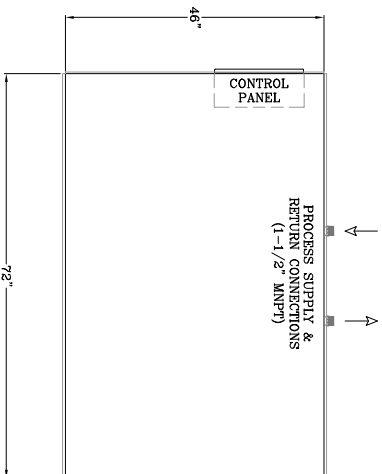
- Options added to the chiller equipment (i.e. pumps, heat recovery, tank size, etc.) may affect the configuration (i.e. weight, dimensions, electrical requirements, etc.). Please verify final configuration of equipment.
- Dimensional tolerances: +/- .2" nominal.

PRO Refrigeration, Inc.

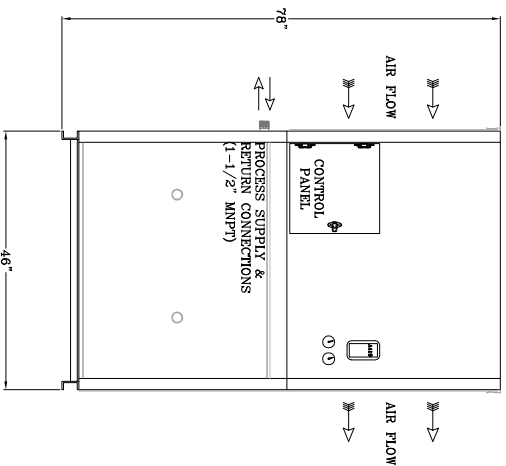
326 8th Street SW Auburn, WA 98001
T: (253) 735-0466 / F: (253) 735-2831
www.prochillers.com



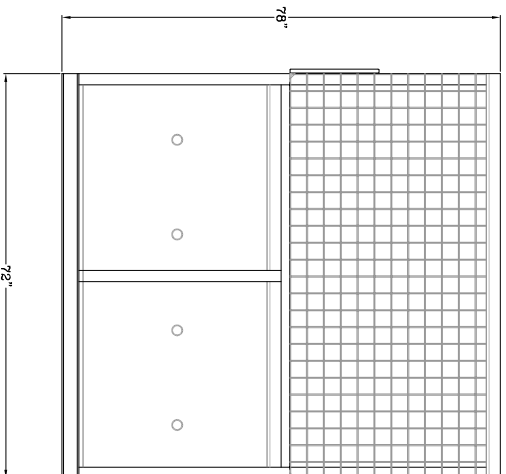
ELECTRICAL SPECIFICATIONS (7-1/2HP):
 MAIN VOLTAGE: 230V/3PH/60HZ
 MINIMUM CIRCUIT AMPACITY (MCA): 50 AMPS
 MAXIMUM OVERCURRENT PROTECTION (MOP): 77 AMPS
 MAIN VOLTAGE: 460V/3PH/60HZ
 MINIMUM CIRCUIT AMPACITY (MCA): 25 AMPS
 MAXIMUM OVERCURRENT PROTECTION (MOP): 39 AMPS
WEIGHT SPECIFICATIONS (7-1/2HP):
 ESTIMATED SHIPPING WEIGHT (GRADED): APPROX. 1,800 LBS
 ESTIMATED OPERATING WEIGHT: APPROX. 2,000 LBS



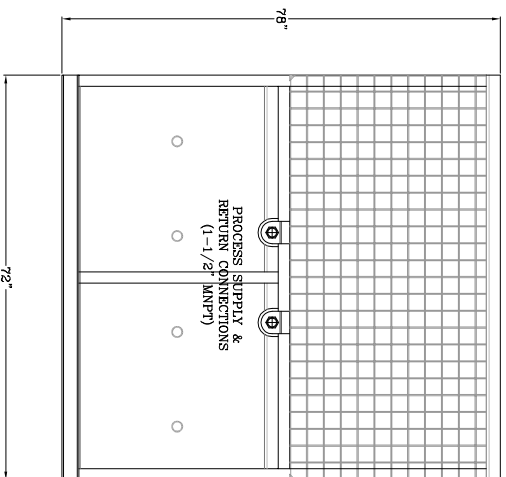
PLAN VIEW



FRONT ELEVATION



SIDE ELEVATION 1



SIDE ELEVATION 2